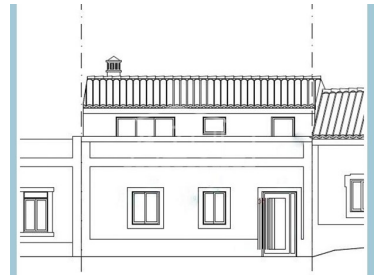




Loulé (São Clemente) - Ruin



 **3** Bedrooms
  **3** Bathrooms
  **211,1** Area (m²)
  **115,86** Land Area (m²)
159 000 € (EUR €)

Old house w/ Approved Project

The central location in the historic heart of Loulé offers a unique experience and the project layout, maximizes the available area and also promotes a comfortable lifestyle. The proximity to the ancient walls of the Castle allows a live side by side with the region medieval history, whilst within walking distance is the vibrant municipal market, restaurants offering many algarvian gastronomic options, well known for its diversity and use of fresh ingredients. Being surrounded by all types of services which guarantees convenience and accessibility, making everyday life both practical and charming. The project comprises a ground floor and a first floor with modern and functional features. On the ground floor, the integration of a large living room and an open-plan kitchen plus an en-suite bedroom that offers comfort and privacy. A small patio provides an outdoor space for relaxation and entertaining. On the first floor are two additional bedrooms, both en-suite and the terrace is a lovely bonus, offering a place to enjoy the nice weather. The project is in the approval phase, its location

T +351 308 801 913 ¹ · T +351 961 620 750 ² · E office@azul-properties.com
 Loja E, Edifício Fonte Nova, EN 125 8100-069 Fonte de Boliqueime
 AMI 5604

¹ (Call to national fixed network) | ² (Call to national mobile network)



1009-2337

Reference

Scan the QR code to view the property



and the surrounding environment are factors that influence the quality of life. This is an excellent opportunity both for living and for investors interested in obtaining income through rentals, in this way, responding to different market needs.

Property Features

- Proximity: Restaurants, City, Shopping, Pharmacy, Public Transport, Schools
- Rustic style
- Floors: 2
- Main drainage
- Energetic certification: Exempt
- Mains water
- Land zoning: Aglomerado urbano
- Built year: Pré 1951
- Views: Village view
- Central location
- Solar orientation: East, West
- Terrace

T +351 308 801 913 ¹ · T +351 961 620 750 ² · E office@azul-properties.com
Loja E, Edifício Fonte Nova, EN 125 8100-069 Fonte de Boliqueime
AMI 5604

¹ (Call to national fixed network) | ² (Call to national mobile network)